

---

**Temrex CR and CR Plus  
Temporary Cements  
Expanding the Selection of  
Temrex Cements**

Temrex Corporation

October 2009

# Selecting the Right Temporary Cement

---

- With today's modern adhesive dentistry, one requires at least two different temporary cements to meet your patient's needs.
- We recommend a very adhesive temporary cement such as TNE in those situations where the preparation is short or there is heavy occlusal loading.
- In situations where there is a single crown with a long tall preparation, a temporary cement with moderate adhesion such as Temrex CR Temporary Cement.

# Temrex Cement

---

Temrex has a wide range of temporary cements for a range of clinical situations

- TNE
- Temrex Cement
- ZINROC
- Temrex CR
- Temrex CR Plus
- ZOE Plus

# Temrex Temporary Cements

	Characteristics	Retention
TNE	Non-eugenol paste-paste Resin based Automix	+++++
Temrex Cement	ZOE powder liquid Can use as base or liner	++++
Zinroc	ZOE with polystyrene Powder liquid system	++++
Temrex CR	Non-Eugenol Paste-paste automix	+++
Temrex CR Plus	Zinc Oxide - Eugenol Paste-paste automix	+++
ZOE Plus	ZOE paste-paste	++

# Temrex CR

---

- Non-eugenol cement base containing zinc oxide and a unique catalyst.
- No pulpal irritation and good biocompatibility.
- Very fast initial set; just over 1 minute.
- Will not inhibit the setting reaction of resin based permanent cements and restorative materials.
- Self mixing syringe and tips.
- Can be dispensed directly into the prosthesis
- Will not stain acrylic temporary materials.
- Odourless, dentin coloured cement.

# Temrex CR

---

**Compressive Strength 35 Mpa**

**Film thickness 15 microns**

**Solubility in oral fluids <2.5%**

**Working Time 70 seconds**

**Setting Time 5 minutes**



# Temrex CR Plus

---

- Zinc oxide – eugenol temporary cement
- Very fast initial set; just over 1 minute.
- May inhibit the setting reaction of resin based permanent cements and restorative materials.
- Self mixing syringe and tips.
- Can be dispensed directly into the prosthesis
- Will not stain acrylic temporary materials.
- Dentin coloured cement.



# Temrex CR Plus

---

**Compressive Strength 35 Mpa**

**Film thickness 15 microns**

**Solubility in oral fluids <1%**

**Working Time 90 seconds**

**Setting Time 5 minutes**



# Temrex Temporary Cements

---

- Understand the clinical situation
- Select the right cement
- Cement your crown with confidence.

---

# Clinical Case

**Restoration of Endodontically  
Treated Posterior Teeth**

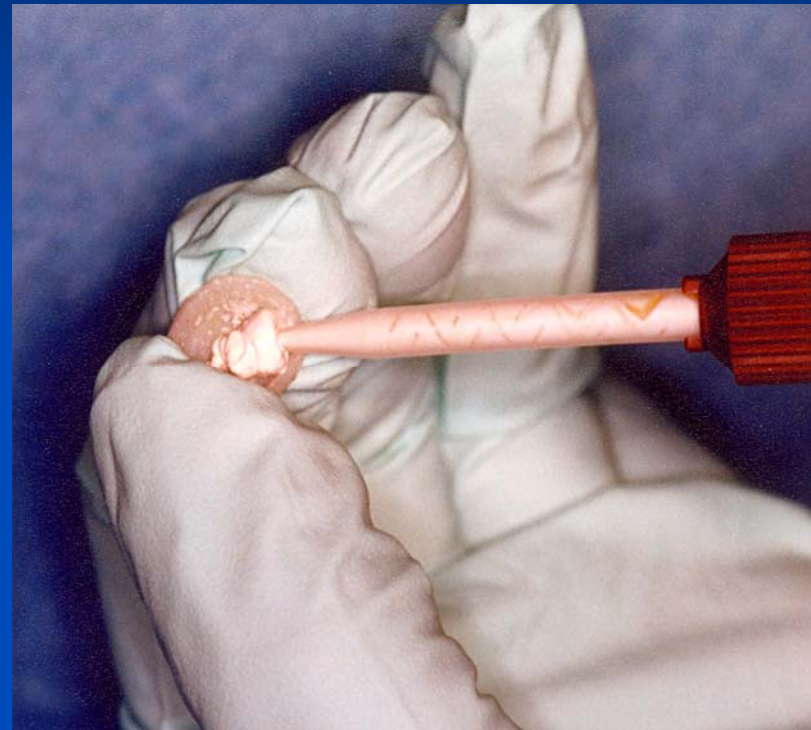
# Initial Situation

---

- Endodontically treated Maxillary Left Second Bicupid and First Molar
- Heavily restored with large composite restorations
- Teeth require post core crown restorations



- 
- Syringe Temrex CR into the temporary crown



# Temporary Crowns in Place 1 Week

---

- Temporary crowns in place 1 week
- No evidence of gingival irritation
- Temporary crowns made from DuraTemp using an alginate impression as a template



---

- Cast post cores placed in the second bicuspid and first molar

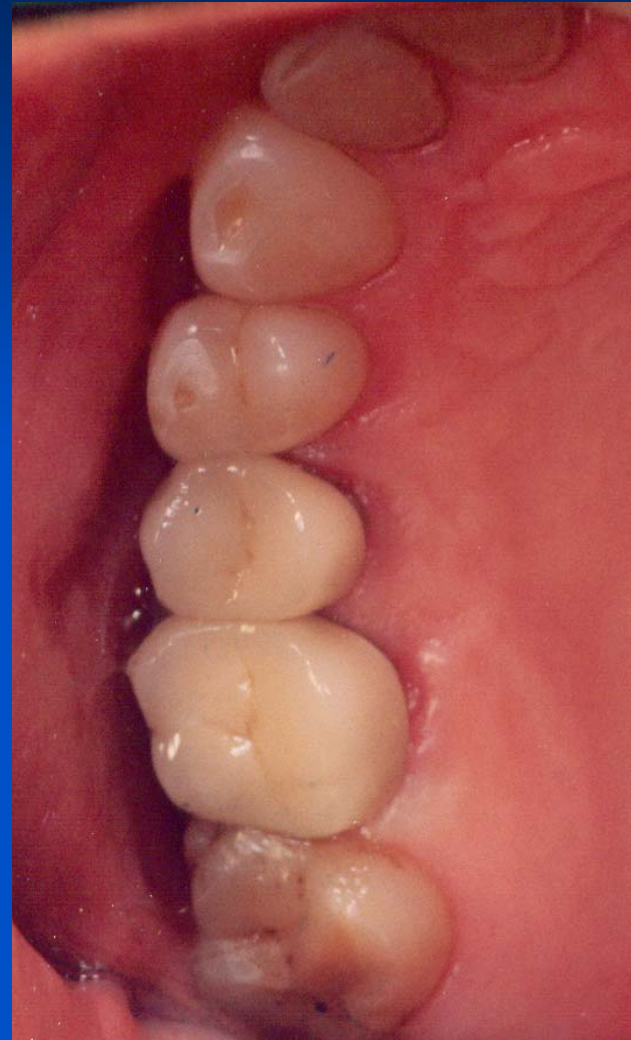
- Very limited coronal tooth structure



# Final Crown

---

- Note; Absence of gingival irritation



# Product Information

---

- **Temrex Temporary Cements:**

- TNE
- Temrex Cement
- ZINROC
- Temrex CR
- Temrex CR Plus
- ZOE Plus

- **Temrex Corporation**

- **Tel: 1-800-645-1226**

- **E Mail: [temrex@centurytel.net](mailto:temrex@centurytel.net)**

- **Web Site: [www.temrex.com](http://www.temrex.com)**